

ALCHEMY

DMC ARGENTINA



13 Days -12 Nights

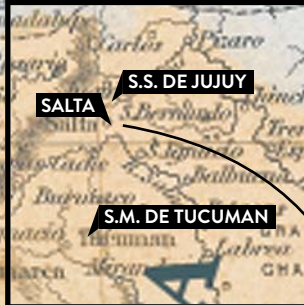
FLY & DRIVE ARGENTINEAN NORTHWEST

SALTA - CACHI - CAFAYATE - TAFI DEL VALLE
PURMAMARCA - IRUYA - TILCARA

2020 - 2021



WWW.ALCHEMYDMC.COM



FLY & DRIVE: ARGENTINEAN NORTHWEST

SALTA, CACHI, CAFAYATE, TAFÍ DEL VALLE, PURMAMARCA, IRUYA, TILCARA
13 Days / 12 Nights

Day 1: Salta

Arrival at Salta (SLA) Airport – Meeting point with your **ALCHEMY DMC Argentina** guide who will assist you to pick up the vehicle and give you the maps along with the last instructions of the program.

H Category: Volkswagen Suran or similar

5 Passengers | 2 Large Bags | Manual | Air-conditioning | ABS | 5 Doors.

- Free km per day - **13 Days Use**
- GPS included
- Airport charges
- Coverage with deductible insurance
- VAT
- Additional driver



Insurance Partial Coverage:

- Insurance against third parties
- Damage Franchise:

ARS 55,000.00-* for theft and damage | ARS 61,000.00-*for collision | ARS 220,000.00-* for Rollover.

*Liable to updates

Now your driving adventure begins! Drive to your hotel in the heart of the city of Salta while sightseeing this wonderful urban district.

Salta is the capital city of the homonymous province. It is situated in one of the most fertile and nicest sites ever created by nature in this region. It is located at 1,187 meters above sea level, at the foot of 20 de Febrero Mount and San Bernardo Mount. The Hispanic architecture of the city outstands from the other cities in Argentina. In Salta, you can feel the colonial spirit from foundation times encrusted on its houses, streets, hundred-year-old monuments and narrow sidewalks.



01 overnight accommodation at **Hotel Balcon de La Plaza** – Classic Room with breakfast included.

Website: <http://www.balcondelaplaza.com.ar/>



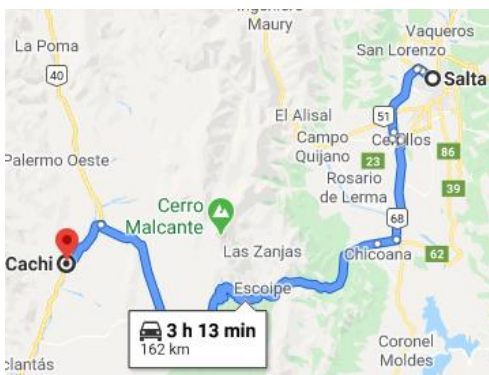
This colonial mansion built in 1896 is part of the Historical and Cultural Heritage of the Salta Province. It has 10 cosy rooms that reflect local culture in their decoration, colours and materials.

Meals: None by **ALCHEMY DMC**

Day 2: Salta

Self-drive from Salta towards Cachi

Distance: 160km – 3-hour drive approximately



You will go through the Lerma Valley with its tobacco's crops and towns with colonial architecture until **Chicoana**.

After Chicoana enter **Escoipe's Gorge**, that has subtropical vegetation, and then submerge into the sizzling and amazing Bishop's slope until you reach the highest point of the excursion: Piedra del Molino, at 3.348 meters above sea level.

A little bit furthermore, you will arrive to the **Los Cardones National Park** along the "Recto del Tin-Tin", the old Inca road, and then to **Cachi**.

Cachi is a peaceful town in the Calchaqui Valley at the foot of the **Nevado de Cachi Hill** with eternal snow at its peak.

The front of the principal square (plaza) is the main entrance to the **Pío Pablo Díaz Archeological Museum**. This museum contains more than 5,000 pieces covering a time period of 10,000 years with a majority covering the time period between 800 BC and 1600 AC. Ancient pictographs figure prominently in the museum, and the staff is extremely knowledgeable about them, and comparative pictographs around the world. 10 kilometers to the south- southwest of Cachi the important ruins of **Puerta de La Paya** are located.

Cachi also has the world's highest vineyard: **Bodegas Colomé**.

01 overnight accommodation at **La Merced del Alto Hotel Cachi** - Standard room with breakfast included

Website: <http://www.lamerceddelalto.com/>



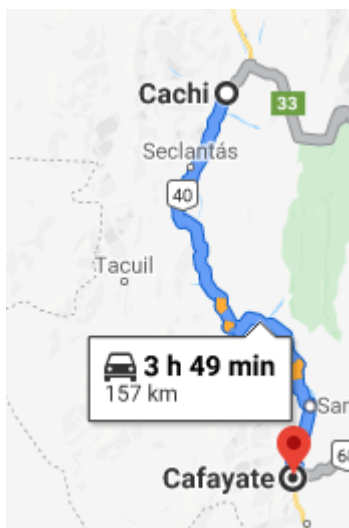
La Merced del Alto Hotel is located in the small town of Cachi, at 159 kilometers from Salta city. This four-star accommodation features a regal adobe building that mirrors a centuries-old Spanish Colonial hacienda. Inside the cloistered, whitewashed rooms, its guests find the perfect indigenous design: terra-cotta floors, woven rugs and embroidered wall hangings, hand-hammered silver chandeliers, soaring cane ceilings, and stylishly austere furniture.

Meals: B

Day 3: Salta

Self-drive from Cachi towards Cafayate

Distance: 157km – 4-hour drive approximately



You will leave the hotel in Cachi after breakfast and start driving south on the famous **National Route 40**, a road that runs for more than 5,000 kilometers along the Andes Mountain Range.

You will drive through the town of **Seclantás**, and 15 kilometers east, the **Ascibi Caves** are a must stop.

After that you could visit the historic town of **Molinos**, which was the place where most of the grains were milled into finer flour and they also would be transported across the mountains into the desert, the puna. You will be able to appreciate its amazing colonial style architecture, with one of the nicest churches in the valleys.

Continuing on the Route 40, you will see the **Angostura** and **El Carmen** cattle ranches, which date back to the valley's colonial period. You then go through the amazing **Quebrada de las Flechas** until reaching **San Carlos**, the original location for the capital city of Salta province that was burned down during the resistance of the Calchaquí tribes. The last stop of this day will be at the town of **Cafayate**.

You will be able to enjoy the quiet pace of this place, which is the heart of high-altitude wine country. At 1,700 meters above sea level, where traditionally most of the world stops producing wine, is where these wines begin.

At the **Vine and Wine Museum** you can find out about the production of high-altitude wines. The **Rodolfo Bravo Regional and Archaeological Museum** is close to the central square of the town and exhibits objects from local excavations. In the square there is also the **Cathedral of Our Lady of the Rosary**. The town also has many handcraft markets to shop at. Don't forget to visit the cellars!

01 overnight accommodation at **Patios de Cafayate Hotel** - Gallery Room with breakfast included.

Website: www.patiosdecafayate.com



The impressive Patios de Cafayate Hotel & Spa is a five-star hotel located in outskirts of Cafayate, in the province of Salta. This property offers a breathtaking view of the Calchaquí Valleys and the adjacent vineyards. Its colonial patios reflect the traditional architecture of the time. This hotel and spa is all about beauty and grace in picturesque surroundings. Its 32 skillfully decorated rooms combine historic elegance with modern amenities to complete a serene and charming experience.

Meals: B

Day 4: Salta – Tucuman

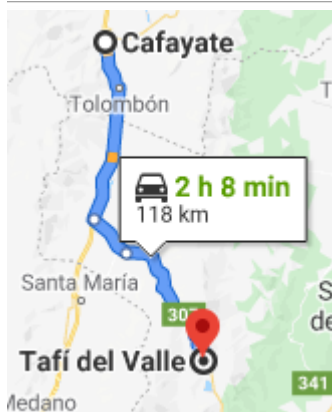
Self-drive from Cafayate towards Tafi del Valle

Distance: 118km – 2-hour drive approximately



Take the National Route 40 to **Tafi del Valle**, again along the Calchaquíes Valleys and cross the border to **Tucuman Province**. You will drive for an hour on the paved road until you reach the **Ruins of Quilmes**, at this place the Quilmes people once settled in the southernmost part of the Calchaquí Valleys and for more than 150 years resisted the conquest by the Incas and the Spaniards. These pre-Inca ruins have been reconstructed, making it possible to visit part of them and see the infrastructure that these people used and defended such a long time ago. You will then have to take the Provincial Route 307 and, after one hour and a half of driving through the valleys, you will reach the town of **Tafi del Valle**.

Tafi del Valle is a villa surrounded by mountains, in the mid-west of Tucuman. It is situated in a big depression and borders on Calchaquí mountains to the east (Mala Mala and Tafi Mountains at 3,500 meters above sea level), the Muñoz Hill (4,400 m) to the west and Nuñorco Grande (3,500 m) on the south.



The Route 307 from San Miguel de Tucuman to Tafi goes into the Tucuman forest and passes through the Quebrada de los Sosa natural reserve. It passes three places of interest. “El Indio” Monument, “The Freezer”, and “The End of the World”.

At the eastern entrance to the Tafi Valley is the village of **El Mollar**, which possesses a variety of tourists’ facilities, as also does the town of Tafi del Valle. One of the main tourist attractions is the collection of menhirs at the **Parque de los Menhires** close to El Mollar. These phallic monoliths, some of them bearing still visible carvings, were shaped by the indigenous people of the Tafi culture. Originally, they stood at different locations throughout the valley, but nowadays they were brought together at the present location to preserve them from damage by visitors.

01 overnight accommodation at **Mirador del Tafi Hotel** – Standard room with breakfast included

Website: www.miradordeltafi.com.ar



Mirador del Tafi Hotel is located in the imposing Valle de Tafi in the province of Tucumán, in the northwest of Argentina. This three-star accommodation is a place where its guests enjoy the landscape along with the comfort provided by its 32 guestrooms. Mirador del Tafi Hotel features an infrastructure with rustic wooden furniture and magnificent views where tradition, nature and exclusive service blend together to provide a pleasant experience.

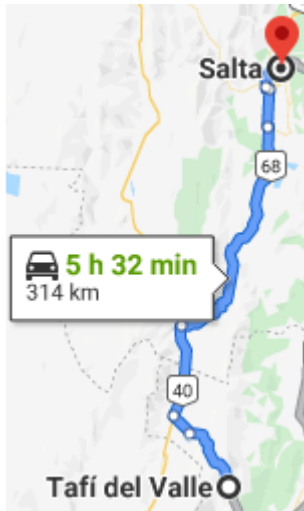
Meals: B

Day 5: Tucuman – Salta

Self-drive from Tafi del Valle towards Salta

Distance: 314km – 5-hour 30-minute drive approximately





After breakfast you will return to the northern area of the Calchaqui Valleys until reaching the city of Salta. You first take the Provincial Route 307 and then the National Route 40, the same route than the day before.

In Cafayate you will have to go through the Provincial Route 68 and drive through breathtaking landscapes, formed by wind erosion. You can make several stops at the amazing rock formations of the **Quebrada de las Conchas**, characterized by intense colors and spectacular geological formations, determined by the concentration of different minerals in the soil.

In the way back to Salta you can do another panoramic stop at the “**Dique Cabra Corral**” or “Cabra Corral Dam”. This construction, which was finished several years ago, is an artificial dam that combines waters from all the rivers of the Calchaqui Valley collecting millions of liters of water. It has a Y shape and it can be accessed by many sides.

It is a favorite spot among the people of Salta when they want to enjoy the weekend. Anything goes there: fishing, bungee jumping, looking for native footprints and much more.

02 overnight accommodations at **Hotel Balcon de La Plaza** – Classic Room with breakfast included.

Meals: B

Day 6: Salta

Salta City Afternoon Sightseeing Experience

Private Service (Personalized) | Vehicle and English speaking driver/guide at disposal | Duration: 3 hours | Mineral water on board | Itineraries are liable to updates to provide a better service according to the day | MAAM Museum Tickets included (closed on Mondays)

Website: <http://www.maam.gob.ar/>



Salta was founded in 1582 by the Spanish conquistador Hernando de Lerma, who was bold enough to put his name to the city: La Ciudad de San Felipe y Santiago de Lerma en el Valle de Sayta (The City of San Felipe and Santiago of Lerma in the Valley of Sayta), the Saytas being the local community that was living in the valley.

Salta has kept its Hispanic atmosphere that distinguishes it from other Argentine cities. Colonial-style houses and churches are prominent, with a backdrop of beautiful mountains. The Salteños, as the locals are known, with their friendly nature and big smiles, lend to the slow pace of life that gives Salta its character. We will visit the oldest part of the city, **Plaza 9 de Julio**, where you can explore the **Basilica Cathedral**, the **Cabildo**, the **San Francisco Church** and the **San Bernardo Convent**, which has a door carved by indigenous artists in 1762. This historic quarter preserves a large part of the city's architectural heritage. We will also visit the most important and transcendental museum of the northwest, the **High Mountain Archeology Museum**.



500 years ago, a group of people went up to the top to the **Llullaillaco Volcano** to finish one of the most important rituals of the Inca calendar, known as "Capacocha".

At the end of the ceremony, three children were drugged, put in a small chamber beneath the earth and left there so they can meet their ancestors and gods.

In 1999 a group of archaeologists found them in almost perfect conditions, together with one hundred and forty-six grave goods. The **Children of the Llullaillaco** are considered to be "the best-preserved Inca mummies ever found".

The High Mountain Archaeology Museum was specially opened to exhibit this discovery.

During the visit, we are able to witness this unique heritage and understand better the Inca culture.

The visit finishes with the exhibit of one of the children (rotated periodically for preservation).

Overnight at **Balcon de La Plaza Hotel**

Meals: B

Day 7: Salta

Free day at leisure to enjoy Salta on your own.

>**Suggested Dinner Activity (Not included - In addition): Dinner at local Peña with music and regional food**

3 Course Dinner with soft drinks and half a bottle of wine included | Private transfers are included



This night you could enjoy a meal at the traditional Casona del Molino, one of the most emblematic restaurants in Salta city. In this place you can find a variety of regional food such as empanadas or humitas that, with the mixture of the best regional wines and traditional music, make Casona del Molino an incredible gastronomic and cultural experience.

Overnight at **Balcon de La Plaza Hotel**

Meals: B

Day 8: Salta – Jujuy

Self-drive from Salta towards Purmamarca

Distance: 321km – 6-hour drive approximately



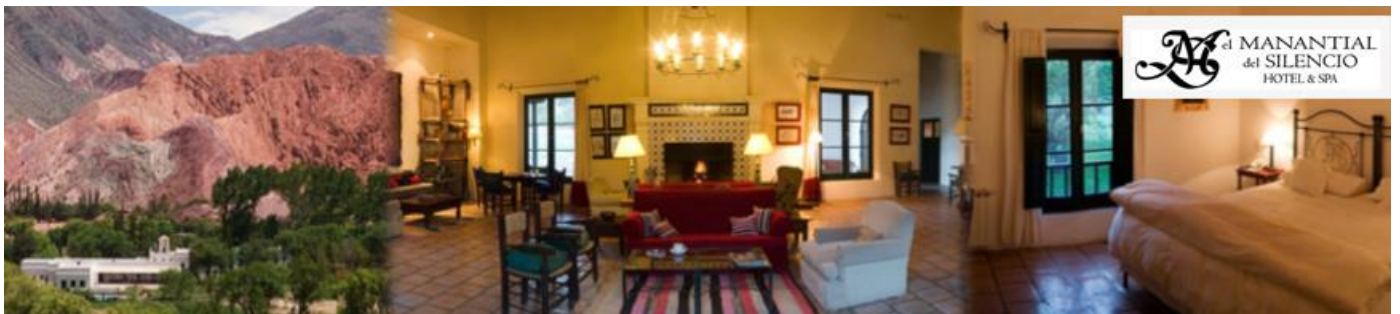
Follow the route of the **Train to the Clouds** rails towards the **Quebrada del Toro** (Bull's River Gorge). You will pass by the ruins of **Santa Rosa de Tastil**, an ancient pre-inca settlement, to finally arrive at the town of **San Antonio de los Cobres** at 3,760 meters above sea level.

Continue crossing the Puna up to **Salinas Grandes**, one of the greatest depressions of the region with an exposed surface of over 12,000 hectares of salt. These endorheic basins are frequent in the high altitudes of the Andes. They contain a diversity of minerals like lithium that today is very important for technology.

You will visit the salt flats and continue on to the next highlight: **Cuesta de Lipan**, an amazing winding road will take you up to 4,200 meters above sea level. While you descend from above the clouds into **Purmamarca**, you will be amazed by the colours of the mountains.

02 overnights accommodations at **Manantial del Silencio Hotel** – Standard Room with breakfast included.

Website: <http://www.hotelmanantialdelsilencio.com/home.html>



Manantial del Silencio Hotel is located in Purmamarca, at 70 Kilometers from San Salvador de Jujuy. It was built in the year 2000, in a strictly neo-colonial style it maintains the local architecture in which indigenous materials were used such as adobe walls and hollow canes for the roofs. This boutique four-star hotel counts with 19 guestrooms tastefully decorated with objects belonging to historical families from the north of Argentina.

Meals: B

Day 9: Jujuy

Hiking with Lamas - Connect with locals & learn more about rearing

Private experience | Vehicle and English speaking guide at disposal | Duration: 90 minutes | Mineral water and snacks on board are included



You will visit an ecological rural establishment whose main objective is to rescue the use of the Llama as a cargo animal. It is important to know that llamas cannot be ridden; they only carry the luggage needed for the trek.

In this 90 minutes trek, visitors can visit this ancient town, learn about the local culture and feel the spirit that surrounds the mounts and this divine animal.

The trip includes quality gear, delicious coffee and biscuits and, of course, "Llamas".

Observations: We can offer a variety of circuits for different kinds of clients: light trips for the family, medium difficulty and tours with greater level of difficulty.

Return to the hotel and rest of the day at leisure...



Today you can relax or go for a walk around the town of Purmamarca where you can enjoy the handcraft fair and also the unique Colorados trail. The trail goes behind the hill known as Cerro de los Siete Colores (Seven-Color Hill), zigzagging and without slopes. It is made of rubble. The area is arid and features scarce creeping vegetation. In turn, the sky of Jujuy contributed its blue tone to compete with the mountains.

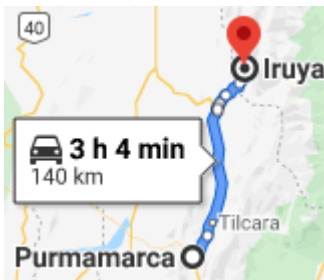
Overnight at **Manantial del Silencio Hotel**

Meals: B

Day 10: Jujuy

Self-drive from Purmamarca towards Iruya, via Humahuaca

Distance: 140km – 3-hour drive approximately



After breakfast you will continue the driving to Iruya and through the **Quebrada de Humahuaca**, which is a narrow mountain valley located in the province of Jujuy. It is about 155 km (96 mi) long, oriented north-south, bordered by the **Altiplano** in the west and north, by the Sub-Andean hills in the east, and by the warm valleys (Valles Templados) in the south. The name **Quebrada** (literally "broken") translates as a deep valley or ravine.

Some interesting towns are in the way like **Posta de Hornillos**, **Maimará** and its **Painter's Pad**, **Tilcara** and its **Pucara**. Further up, **Huacalera**, **Uquía**, and after crossing Capricorn tropic, we get to **Humahuaca**.

Humahuaca is the biggest town in this area, so you can stop and visit the Church, the old Town Hall, and the Argentine Independence War's Monument, you can make a nice walk all along this area.

Again in the route and after reaching the altitude of 4,200 meters on a zigzagging route in the Abra del Condor, right at the natural border between Jujuy and Salta, surrounded by breathtaking landscapes you will get into **Iruya town**, your final stop today!

Iruya is literally "hanging" from the mountain. It is located at an altitude of 2,780 above sea level. Its narrow colonial streets will make you feel like you went back to the past.

02 overnight accommodations at **Hotel Iruya** – Valley View Room with breakfast included

Website: <http://www.hoteliruya.com/>



The Hotel Iruya was built in the highest part of the town, from where you can have a visual domain of the valley, the river and the stream. Our visitors enjoy our large terrace and gallery, where it is common to see condors and other species of birds in the region. In the comfort of our hotel, in addition to the imposing nature that surrounds it, you will find details of the region's careful design and you will be able to enjoy our regional and gourmet cuisine.

We invite you to know the millenary culture of the Andes, to live the Andean experience from where the sun rises, to discover a quiet and unique place, to walk the stone and the silence, the water and the steps in the mountain.

Meals: B

Day 11: Jujuy

Free Day at leisure to explore Iruya on your own.



The town is popular among tourists for its scenic location and townscape and friendly locals. We recommend to visit the “Mirador de la Cruz”, the local Cemetery and the “Cerro de la Banda”. The ideal time to visit these places is during the morning so as to take panoramic pictures of Iruya with the best light.

You can also have the possibility to do a very nice trekking of medium difficulty to go to the nearest village called San Isidro. It is a 2-hour trek and you can have lunch at a local restaurant of that small town. This activity can also be done with 4x4 vehicles during the dry season (April to October).

Overnight at **Iruya Hotel**

Meals: B

Day 12: Jujuy

Self-drive from Iruya towards Tilcara

Distance: 116km – 2-hour 40-minutes drive approximately



To make more relaxing the return to Salta before your departure we recommend to divide the trip and make a stop in **Tilcara**. Traces of human habitation in the area date back more than 10,000 years, making it one of the oldest continuously inhabited settlements of Argentina.

The area features dramatic mountainous landscapes and rich aboriginal tradition, which make it a major tourist attraction in northwestern Argentina.

Possibly the biggest attraction in Tilcara is the nearby **Pucará de Tilcara**, the partially reconstructed ruins of a pre-inca pukara, Quechua for “fortress”, located a few kilometers away from the town with an impressive view of the Rio Grande Valley.

01 overnight accommodation at **Las Marias Hotel Boutique** – Superior Room with breakfast included

Website: www.lasmariastilcara.com.ar



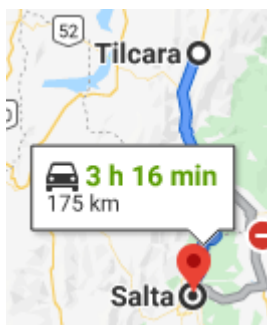
Three blocks from the main square of Tilcara, the cultural heart of the Humahuaca Valley, surrounded by majestic mountains and hills of colors, Boutique Las Marias Hotel Tilcara you can enjoy comfort in a natural setting. The architectural style, combining local materials and the warmth of its furniture and decoration, respect the local culture and blend harmoniously with the beauty of the landscape.

Meals: B

Day 13: Jujuy – Salta

Self-drive from Tilcara towards Salta

Distance: 116km – 3-hour drive approximately



You will drive again on the National Route 9 and along the Quebrada de Humahuaca for last time in this trip. You will pass through the city of **San Salvador de Jujuy**, Jujuy province capital city. After two hours driving you will reach the city of Salta. Your guide will be waiting for you at the airport to help you on the drop off and give you a warm farewell!

Meals: B

****End of services****

PROGRAM RATES

Rates are liable to availability and updates when booking.

Includes all above land services, except the ones specifically informed as optional ones or possible supplements.

Includes Visit Buenos Aires tax unless specified by client that he wants to pay it upon check out. Tax value depends on the category of the hotel and is determined per person and per night of accommodation.

- **Valid from September 2020 to March 2021:**

Net Rate per person in Double Occupancy from **U\$D 1,190.00**
Single Supplement from **U\$D 715.00**

- **Valid from April to September 2021:**

Net Rate per person in Double Occupancy from **U\$D 1,260.00**
Single Supplement from **U\$D 755.00**

+ International Bank Wire Fee – USD 30.00

Rates based on 2 guests minimum - Single supplement only for accommodation (Solo travelers to be quoted upon request).

****Not valid for Festive Season or Holidays****

Exempt Taxes for foreigners only on Accommodation

21% VAT only on accommodation is exempt for foreigners- nonresidents in the country.

In order to apply 21% VAT exemption on accommodation a scanned copy of each passenger's passport, proving their nationality, must be presented at least 10 days before the check-in date.

In case of no shows and reduction of group allotments, the penalties to be applied will be invoiced with 21% VAT.

AIR FARES

Current GDS flight, liable to updates and availability. Best available flight connection at the moment for route **BUE/SLA/BUE**.

Please add to Land Program Rates for full budget.

Aerolineas Argentinas - Economy Class

Net rate per person including tax from **U\$D 250.00**

(Hand baggage allowance of 8 kilos and 1 piece of 15 kilos each in checked bags per person)

Domestic flights in Argentina do not have first class or business. Premium Economy class has preferential location on board with seats in lines 1 and 2, where you will find more comfort (more space between lines and with only 2 seats per line). All passengers traveling in Premium Economy class will have access to exclusive check-in counter. Priority boarding and disembarking.

ALCHEMY DMC Argentina will not be responsible for any modification or cancellation, acts or omissions, unforeseen event or force majeure of the airlines contracted to make the transfers by air according to article 1730 of the Civil and Commercial Argentinean Code. Likewise, any possible expenses caused by the above-mentioned reasons, such as lodging, food, transfer of passengers, modification in their itineraries and / or original programs, among others, are excluded from any claim to ALCHEMY DMC Argentina.

> In case that any new local regulations and/or biosafety protocols around COVID 19 were to affect either the flow of activities or rates, we will be reporting it accordingly. We will review this proposal in the event that the mentioned measures imply any additional expenses which are not included at this time. Capacities of vehicles, restaurants, ballrooms and meeting rooms do not contemplate any social distancing.



ALCHEMY DMC Argentina - Terms and Conditions

Information about our rates

- Net rates.
- Rates are in US dollar, per person or per service, as specified.
- Rates liable to changes and availability.

Program INCLUDES

- All mentioned activities with bilingual guide services (English/Spanish or Portuguese) or as above specifications.
- All taxes and reservations expenses.

Program does NOT Include

- International and Domestic airfare.
- National Park tickets, museums or Natural reserves entrances in case not mentioned as included in itinerary.
- Airport arrival/departure taxes (if any).
- Meals and beverages not mentioned in itinerary.
- Gratuities, tips for guides, drivers, porters, waiters, etc.
- Expenses of personal nature (laundry, beverages, telephone calls, etc.).

Passport and Visa Requirements

You should clarify visa requirements with the Embassies of the countries that you plan to visit as certain countries may require you to take out a visa. It is the passenger's responsibility to have all the proper and valid documentation to enter the countries involved in the trip. Prior to confirming your travel arrangements, you should check your Passport and establish that it will remain current for the entire period of your travel. Please be aware that the name on your airline ticket must be identical to that on your Passport.

Entering Argentina

A passport with a validity of at least 6 months until its expiration date is required. Citizens of the USA, most European countries, Australia, New Zealand, Canada and most of the countries LATAM do not need a visa to enter. For more information check with your closest Argentine consulate or: <http://www.migraciones.gov.ar/accesible/indexdmn.php?visas>

Entering Chile

A passport with a validity of at least 6 months until its expiration date is required. Citizens of the USA, most European countries, Australia, New Zealand and most of the countries LATAM do not need a visa to enter. For more information check with your closest Chilean consulate or: [Link](#)

Entering Brazil

Brazil does not request Canada, USA, Australia and Mexican citizen to pay a reciprocity fee or VISA. For more information: <http://www.portalconsular.itamaraty.gov.br/vistos#precisa>

Terms and condition for FIT:

- All reservations should be requested by email, and should be confirmed in writing as well. ALCHEMY DMC Argentina will send a written confirmation via email.

Cancellation policies:

- 10% penalty of the booking for cancellations made after first payment.
- Less than 30 days prior to the beginning of services the penalty will be a 100% charge of the service no-show.
- * IMPORTANT - Please only consider a reservation cancelled once you have received ALCHEMY DMC Argentina written confirmation.

Full programs change fee policy individual travelers

- Changes made after full payment will have a change fee of USD 15.00 per booking or according to any special supplier restriction.

Hotel Policies

- Included: Buffet Breakfast and taxes (VAT - 21%) unless otherwise specified.
- Pre-Night: Check in time is generally at 15:00 hrs. If check in should be guaranteed before this time, a pre night at full charge must be charged.
- Late Check out: Check out time is generally up to 12:00 hrs. depending on hotel, the extension of this time must be requested before the check in. The charge for late checkout will be of 100%.

Tours, Transfers & Shows Policies

- Included: taxes (VAT - 21%)
- Services length will be according to itinerary, any guests delay or extension will be charged to guests or travel agency client.

Force Majeure In case of cancellations or reprogramming the trip due to natural disasters or major incidences our company will apply terms and conditions provided by our partners/suppliers.

Vaccinations

Certain countries require that travelers be vaccinated against specific diseases. Check with your doctor and the Embassies of countries to which you are traveling to satisfy yourself as to whether your destination has any requirements in this respect.

Checking Travel Arrangements

We have implemented maximum care in putting together the planning and requirements concerning your travel and accommodation. It is important that you check all of the documentation supplied to you in relation to your travel arrangements to ensure that it meets your requirements in it is entirely and there are no misunderstandings.

Travel Insurance

We highly recommend obtaining a travel & trip cancellation insurance policy alongside with the final payment on your trip. The policy should provide coverage and costs associated with trip cancellation, trip interruption, trip delay, baggage & personal effects loss, baggage delay, medical expense, emergency evacuation & repatriation of remains, accidental death & dismemberment, among other items.

Flights delays or cancelations

ALCHEMY DMC Argentina will not be responsible for any modification or cancellation, acts or omissions, unforeseen event or force majeure of the airlines contracted to make the transfers by air according to article 1730 of the Civil and Commercial Argentinean Code. Likewise, any possible expenses caused by the above-mentioned reasons, such as lodging, food, transfer of passengers, modification in their itineraries and / or original programs, among others, are excluded from any claim to ALCHEMY DMC Argentina.

Prices Increases

Airfare and tour prices may change (almost invariably by being increased) without prior notice and even though your arrangements are confirmed. Such price increases are beyond our control.

Payments Schedule

First payment will be confirmed upon booking.

Payments

Full payment due 30 days before start of program.

If payment has not been made by the specified date, bookings may be cancelled.

Payment thru bank wire have a USD 30.00 bank fee and payments thru credit card a 4% surcharge. They are not included in the quotation.

Contact Information



Address: San Martin 674, 2ºB - CP 1004 - Buenos Aires – ARGENTINA

Phone/Fax: +54-11-4894-0277

Office Hours: Monday to Friday from 9:30 to 18:30 hrs.

Time Zone: UTC/GMT – 3 hours

Enquiries for FITs: argentina@alchemydmc.com

Enquiries for Groups: groups@alchemydmc.com

Website: www.alchemydmc.com

Emergency 24hrs

Email: e24@alchemydmc.com

From Argentina: 15-5715-9093

From outside Argentina: +54-911-5715-9093

Argentina Tourism ID 12538

Safe travels

by

WORLD
TRAVEL &
TOURISM
COUNCIL

ALCHEMY
DMC ARGENTINA

site
Society for
Incentive
Travel
Excellence

 **LATINAMERICAN**
ALLIANCE

 **EMINENCE**
YOUR BRAND VOICE IN CATALUNYA


Member of
AV Alliance


Latin American
Travel Association


Argentina